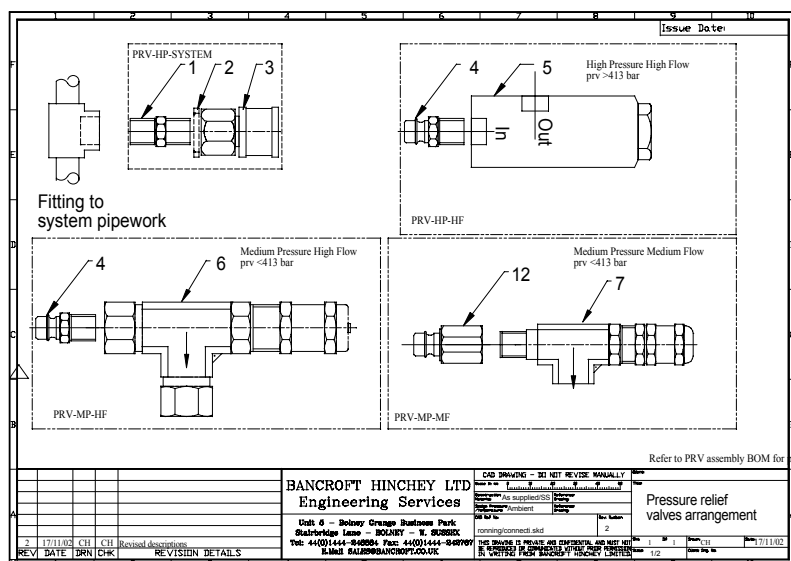
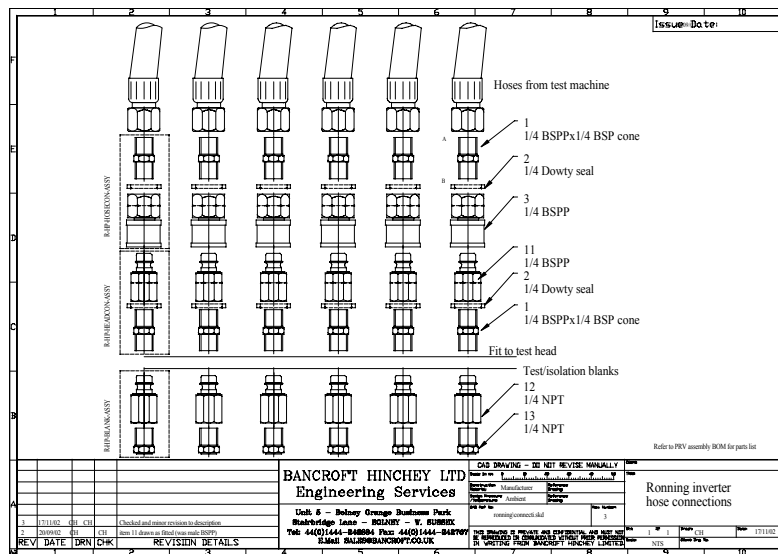




Pressure Relief Valve Details

| Description | Fitting A | Fitting B | Pressure rating /Bar | Accuracy | Flow /lpm | Bancroft part no |
|---|-----------|--------------|----------------------|-------------|------------|-------------------|
| Nipple to system pipe work | 1/4 BSPP | 1/4 BSPP | 500 | n/a | n/a | R-PTM-NIPPLE |
| Dowty seal | 1/4" | | | n/a | n/a | B-DOWTY-1/4 |
| Quick connect coupling female | 1/4 BSPP | 1/4" coupler | 690 | n/a | 45 | 69-38-0007BSP |
| Quick connect coupling male nipple | 1/4 NPT | 1/4" coupler | 690 | n/a | 45 | 69-38-0014 |
| Pressure Relief valve, high pressure, high flow | 1/4 NPT | 1/4 NPT | 620 | ±5% | 20 | PRV1/4NPT-HP |
| Pressure Relief valve, medium pressure, high flow | 1/4 NPT | 1/4 NPT | 413 | ±5% | 21 | PRV1/4NPTHIGHFLOW |
| Pressure Relief valve, medium pressure, medium flow | 1/4 NPT | 1/4 swagelok | 413 | ±5% | 1 | PRV1/4NPTX1/4 |
| Quick connect coupling male nipple | 1/4 BSPP | 1/4" coupler | 690 | n/a | n/a | 69-38-0014BSP |
| Quick connect coupling male nipple | 1/4 NPT | 1/4" coupler | 690 | n/a <td n/a | 69-38-0076 | |
| Blank | 1/4 NPT | 1/4 NPT | 1296 | n/a | n/a | S1 |



EUROPEAN SALES & SERVICE COORDINATORS FOR GALISO PRODUCTS